

**LUX**  
SERIES

**TITAN**

US



*The perfect laser cutting solution*

**JORDI**  
TECH & INNOVATION **USA**



# You are welcome

---

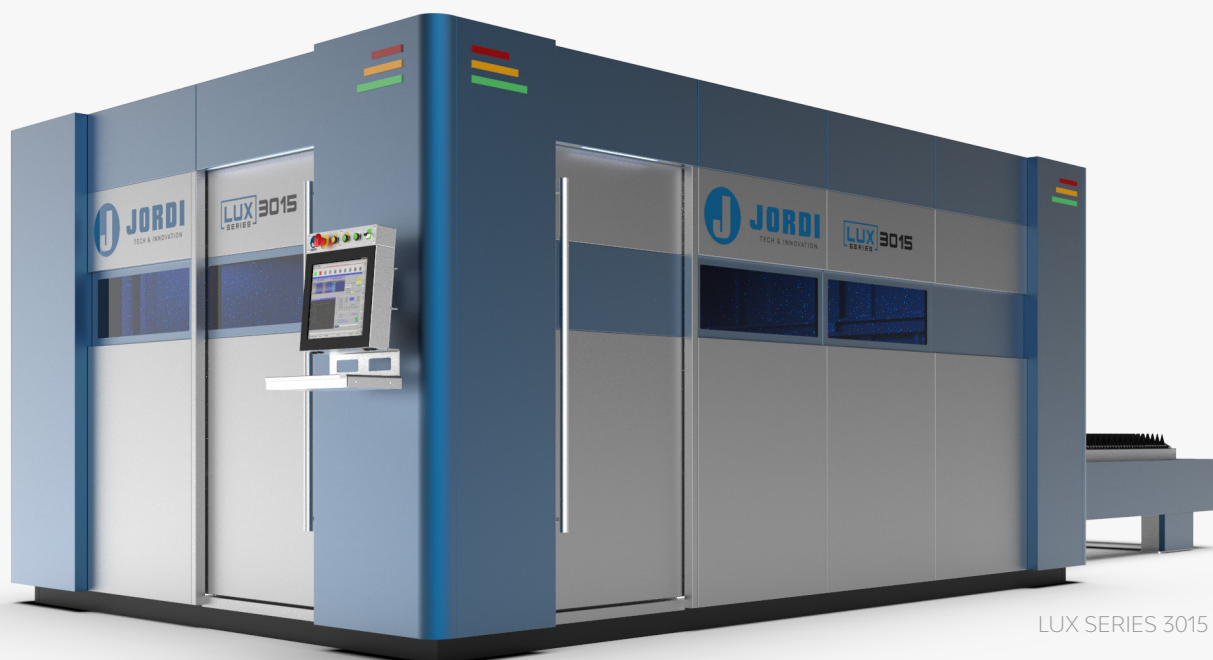
We present the new **LUX SERIES**, the laser cutting center that will provide your company with the latest advances in development and innovation.

**Discover a new way of working based on speed and precision.**



# Table of Contents

TABLE OF CONTENTS	3
INTRODUCTION	4
PRODUCTION PROCESS	5
LUX SERIES	6 - 7
LUX SERIES <b>TITAN</b>	8 - 9
LUX SERIES ADVANTAGES	10
TECHNICAL SPECIFICATIONS	11
ANNOTATIONS	12
CONTACT	13



LUX SERIES 3015

## — INTRODUCTION

At Jordi, we are committed to reliability and quality. The requirement is the basis of our work and is implemented in each of the research and production processes. **Thanks to this we have created the new LUX SERIES, the culmination of our commitment to innovation and development.**

We are experts in laser cutting machinery. Our experience in this sector has led us to the creation of the LUX SERIES.

The LUX SERIES competes at all levels with any other product on the market. Discover it now and transform your company into a production environment based on excellence, precision and speed.

## — QUALITY MADE IN EUROPE



# MADE IN EUROPE

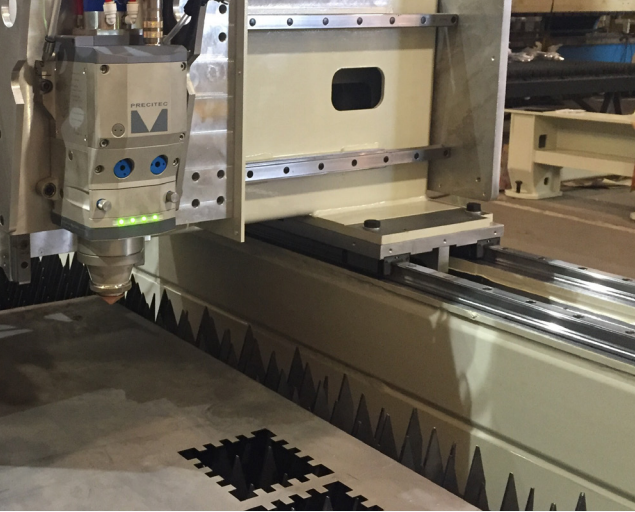
**The LUX SERIES is designed and manufactured exclusively in Spain.** We believe in our industry and we know that we are a country with the highest levels of industrial innovation in the world. For this reason, we wanted our LUX SERIES to create a production environment that matches their expectations.

In addition, **all the components of the LUX SERIES are manufactured and produced in Europe,** since we believe in the quality and excellence of each and every one of the pieces that make up our machines. That is why we choose materials that have grown in an environment of experience, innovation and technology.

On the other hand, we conduct exhaustive quality controls to ensure the perfect functioning of the LUX SERIES.

**With Jordi you will ensure quality, speed and precision in each and every one of the production phases in your company, thanks to our European quality.**





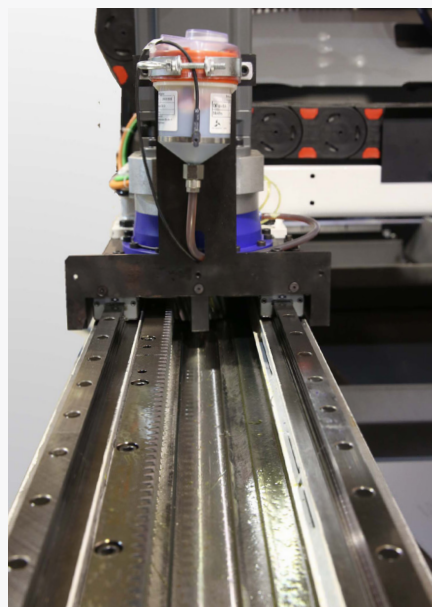
Cutting process



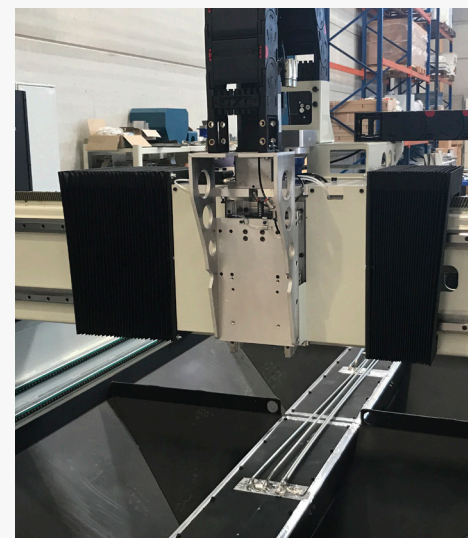
Jordi's assembly line



Detail of the gearbox



Bridge displacement guides



Cutting Head location

## — MANUFACTURING AND QUALITY PROCESS

**The production phases of our LUX SERIES are standardized and certified, in order to always guarantee the highest quality through the use of the latest technology in numerical control machines.**

We have total control over our manufacturing process, which makes the LUX SERIES the best solution for your company. We know perfectly the demand of the market and therefore we make our machines adapt to it and exceed any manufacturing standard.

On the other hand, we have an exclusive tracking of each of our LUX SERIES to access the history of any of them and know where it is and offer you the best after-sales service.



**3015**

**4020**

**6020**

**8020**

## FLYING OPTICS

The LUX SERIES works under the principle of Flying Optics. This means that the sheet remains in the cassette holder of the machine and the laser head moves in the X and Y directions.

This construction allows high acceleration values 2G and, in conjunction with an absolute direct measuring system, guarantees maximum geometry precession of the components.

## SYSTEM OF SECTIONED CAMERAS

The LUX SERIES has a system of sectioned cameras that suck dust and particles in suspension during the cutting process. In this way, maximum precision in cutting results is guaranteed, as well as cleaning tasks are facilitated and minimized.



## ✓ RACK & PINION

The LUX SERIES has a high-speed Wittenstein rack and pinion motion system which provides same speeds/performance than a linear motor system but without deterioration and dirt problems. (SP +2G, 280 m/min combined speed).

## ✓ PROTECTION CABIN WITH OPENING

The LUX SEIRES has lateral openings (A door in one side and a roller blind in the other) that allow to access inside the machine in an easier and safer way. Thank to them, maintenance and cleaning tasks are easier hence there is no need to disassemble any part of the machine, avoiding deterioration and wear.



## ✓ PROTECTION CABIN WITH OPENING

Our LUX SERIES has an **automatic shuttle table system** through Gantry connected servomotors which facilitates the loading and unloading of parts and sheets. **There is also the possibility to install an automatic loading and unloading tower to automate even more the process.**



LUX SERIES 6020

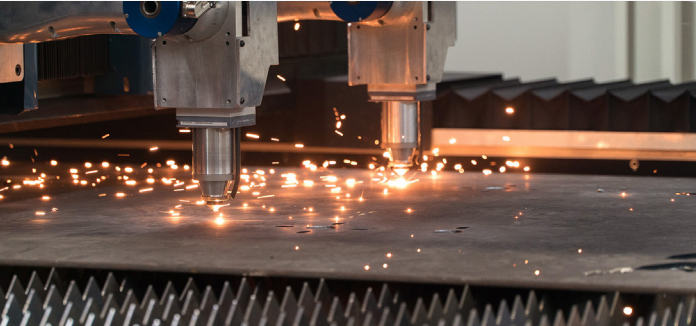
## ✓ DOUBLE STRUCTURE

**It also has two base structures, instead of one.** Since vibration is non-existent, the machine becomes much more precise and allows higher speeds and acceleration.

# TITAN

## 12030

## 18030



### ✓ DOUBLE HEAD

The machine allows the possibility of incorporating a second cutting head with its independent resonator, to double the productivity.

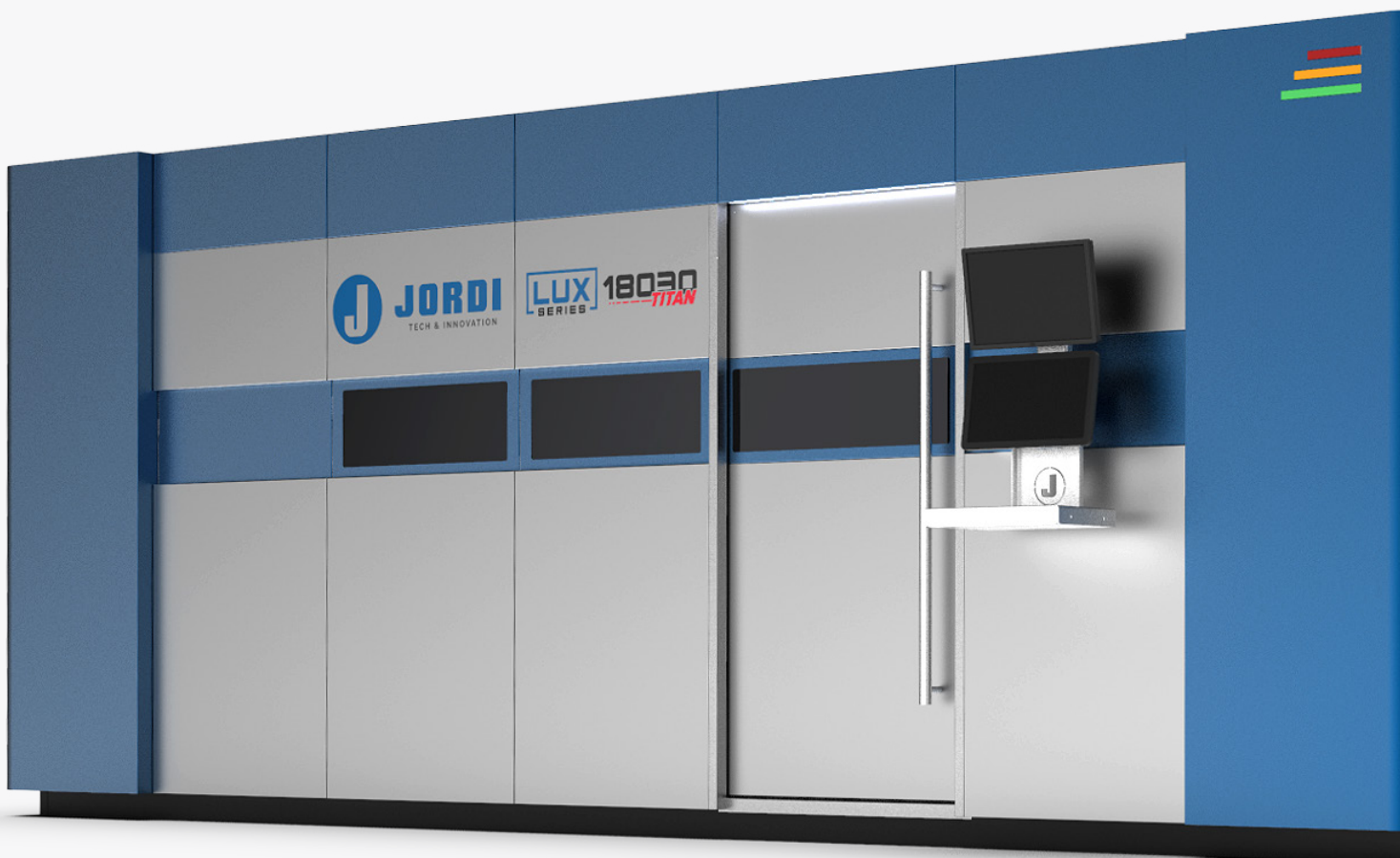
**Being able to choose between work in tandem or with the head one or two independent.**



### ✓ 4TH AND 5TH AXIS CUTTING HEAD

**Option for bevel cutting.**

With the possibility of working in Interpolated with the two axes (4th and 5th) simultaneously.



## ✓ SYSTEM OF SECTIONED CAMERAS

A system of sectioned cameras that suck dust and particles in suspension during the cutting process. In this way, maximum precision in cutting results is guaranteed, as well as cleaning tasks are facilitated and minimized.

## ✓ FLYING OPTICS

**The LUX SERIES works under the principle of Flying Optics.** This means that the sheet remains in the cassette holder of the machine and the laser head moves in the X and Y directions.

This construction allows **high acceleration values 1G and**, in conjunction with an absolute direct measuring system, guarantees maximum geometry precession of the components.

## ✓ RACK & PINION

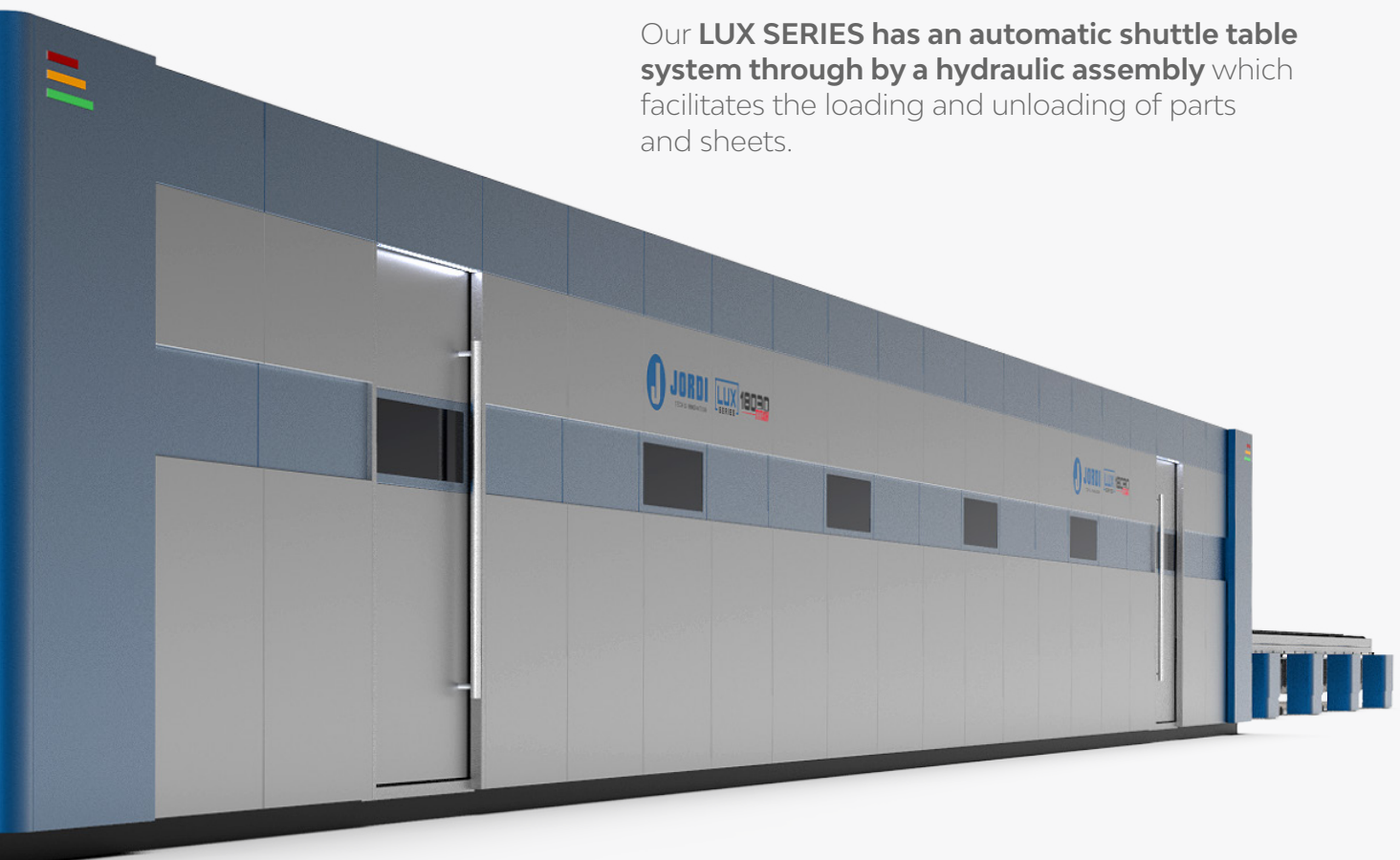
**The LUX SERIES has a high-speed Wittenstein rack and pinion** motion system which provides same speeds/ performance than a linear motor system but without deterioration and dirt problems. **(SP +1G, 140 m/min combined speed).**

## ✓ PROTECTION CABIN WITH OPENING

**The LUX SERIES has lateral openings** (A door in one side and a roller blind in the other) that allow to access inside the machine in an easier and safer way. Thank to them, **maintenance and cleaning tasks are easier** hence there is no need to disassemble any part of the machine, avoiding deterioration and wear.

## ✓ AUTOMATIC SHUTTLE TABLE

Our **LUX SERIES has an automatic shuttle table system through by a hydraulic assembly** which facilitates the loading and unloading of parts and sheets.



LUX SERIES	3015	4020	6020	8020	12030	18030
Working Area	122 x 61 In	161 x 82 In	240 x 82 In	318 x 82 In	472,50 x 122 In	708 x 122 In
Speed X			6,690 In / Min		4,330 In / Min	4,330 In / Min
Speed Y			8,660 In / Min		4,330 In / Min	4,330 In / Min
Combin. Speed			10,630 In / Min		6,100 In / Min	6,100 In / Min
Tolerance position			0.000787 In			
Repetitivity			0.000787 In			
Cnc	ESAUTOMOTION S675 PC TOUCH					
Max load	4,410 Lbs	7,715 Lbs	11,020 Lbs	16,530 Lbs	36,375 Lbs	48,500 Lbs
Power	From 2 Kw to 12 Kw					

### Complete installation measures

Height		98.5 In			115 In	115 In
Long	375 In	452,5 In	610,5 In	767,5 In	1260 In	1732 In
Width	236 In	267,5 In	267,5 In	267,5 In	452,5 In	452,5 In
Weight	27,560 Lbs	42,330 Lbs	52,910 Lbs	63,935 Lbs	79,365 Lbs	143,300 Lbs

#### CNC Esautomotion S675 PC TOUCH

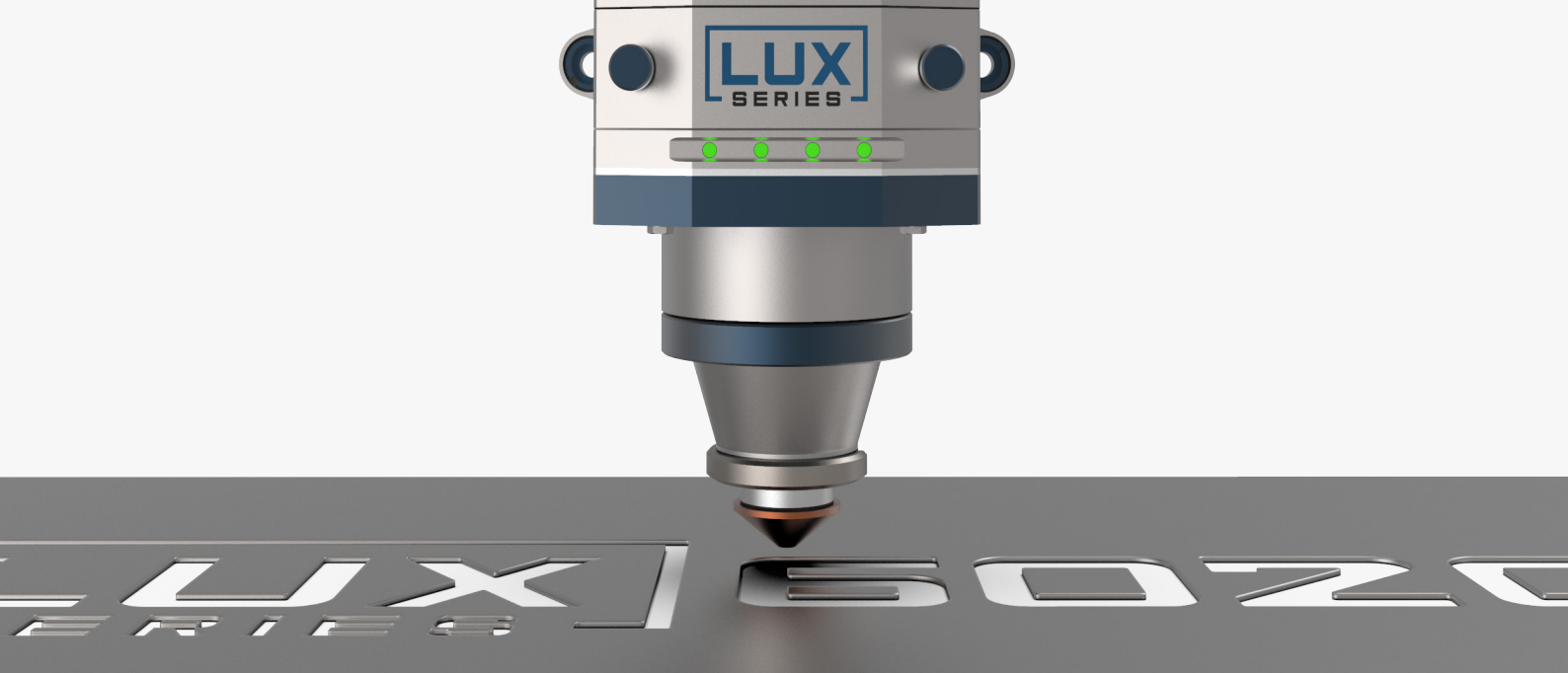
Display 21" TFT LCD, SXGA-1280x1024  
 CPU 2GHz, AMD Embedded GX-420CA.  
 Windows 10 Ultimate.  
 Up to 31 axes in 10 different channels  
 20GB HDD (Sata).  
 4 x USB 2.0.

Connection of peripherals through EtherCat.

Integrated diagnostic system with Telecare.

LANTEK-Expert CUT-PLUS software (Automatic Nesting and Cutting System).

Precitec Pro-Cutter head with AutoFocus and capacitive sensor for contour tracking and constant height control.



## — ADVANTAGES AND BENEFITS



### AFTER SALES SERVICE

**The LUX SERIES has an excellent and unbeatable service after its purchase.**

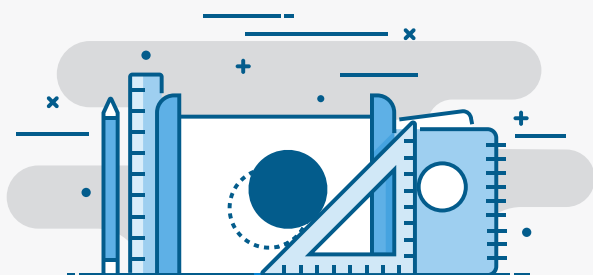
Not only you will have 24 months warranty on the whole machine, but also the resonator has an exclusive extension of 12 more months, 36 in total.



### SPEED AND PRECISION

We don't just want to deliver the product. **We care about meeting those needs in record time by reducing costs.**

Working on reducing the installation and lead times of your **LUX SERIES** is one of our priorities.



### PERSONALIZATION

**Have you never thought about having a LUX SERIES with your company logo?**

The moment has arrived.

Check our customization options.

## — ANNOTATIONS



*The perfect laser cutting solution*

Pol. Ind. Les Comes  
C/ Variant 35-37  
25123, Torrefarrera  
Lleida (Spain)

1300 Landmeier Rd  
Elk Grove Village  
IL 60007  
USA

[sales@jordi.es](mailto:sales@jordi.es)  
[www.jordi.es](http://www.jordi.es)

(+34) **973 751 051**  
(+34) **902 100 529**



**MADE IN  
EUROPE**